

EETI Mac Touch Driver Installation Guide

Version: 1.16.9106

Operation System: Mac OSX 10.5

Release Date: 7-6-2009

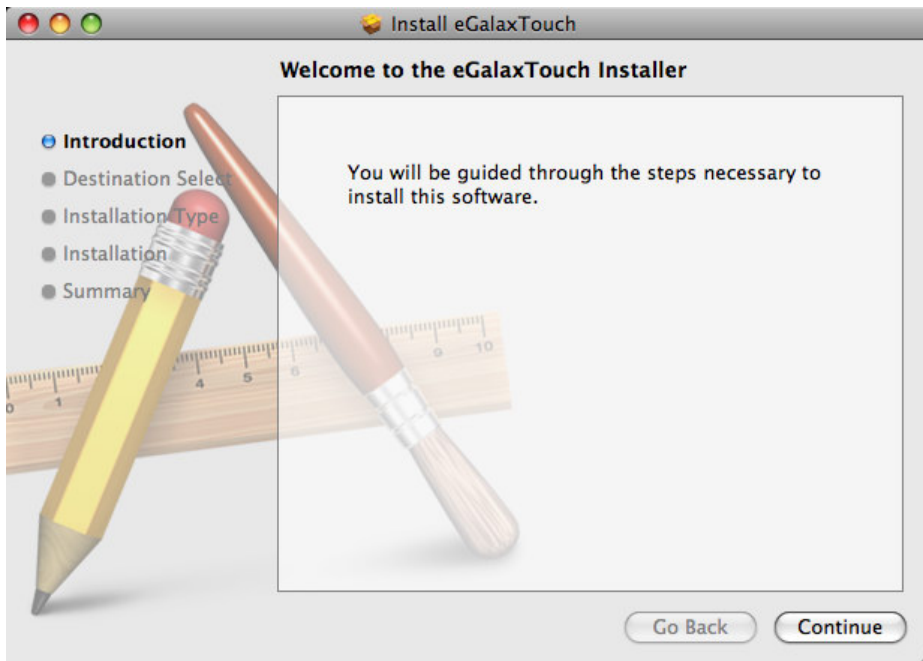
Contents

1. Installation Procedure.....	2
2. eGalaxTouch Utility Setting.....	4
3. Uninstall Driver.....	6

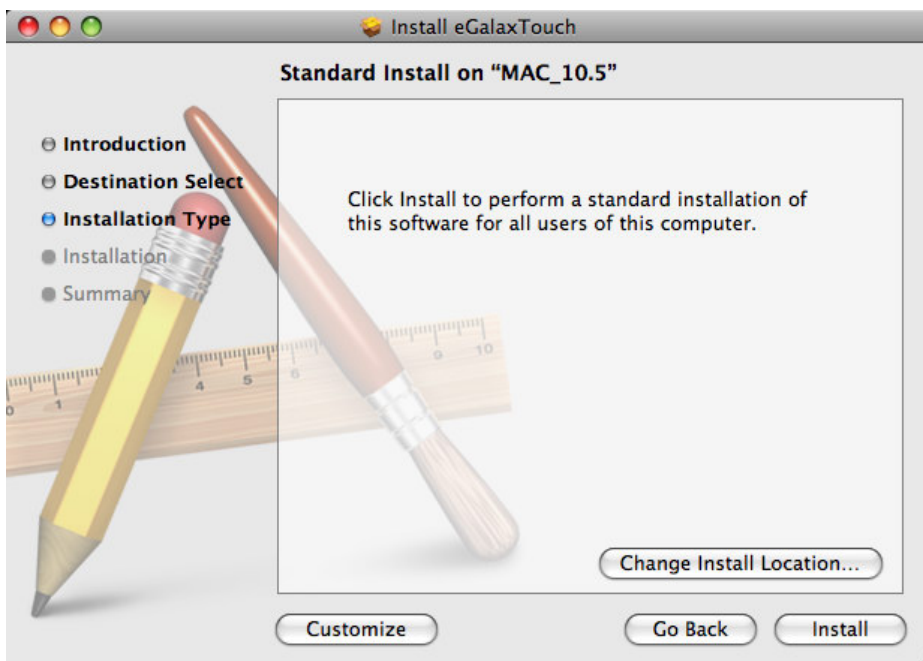
1. Installation Procedure

Please unzip the driver package and launch TouhKit Installation procedure.

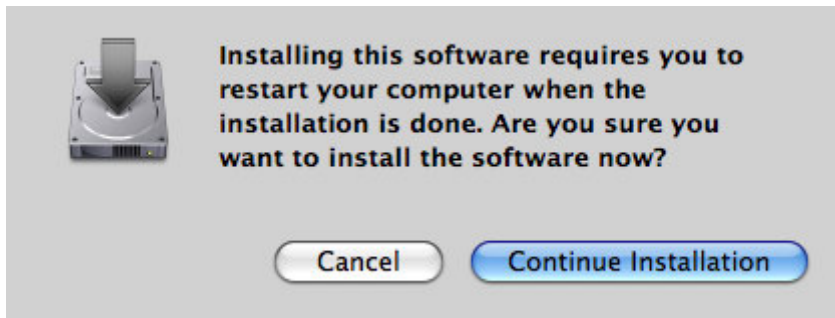
1.1 Please unzip the driver package and launch TouhKit Installation procedure.



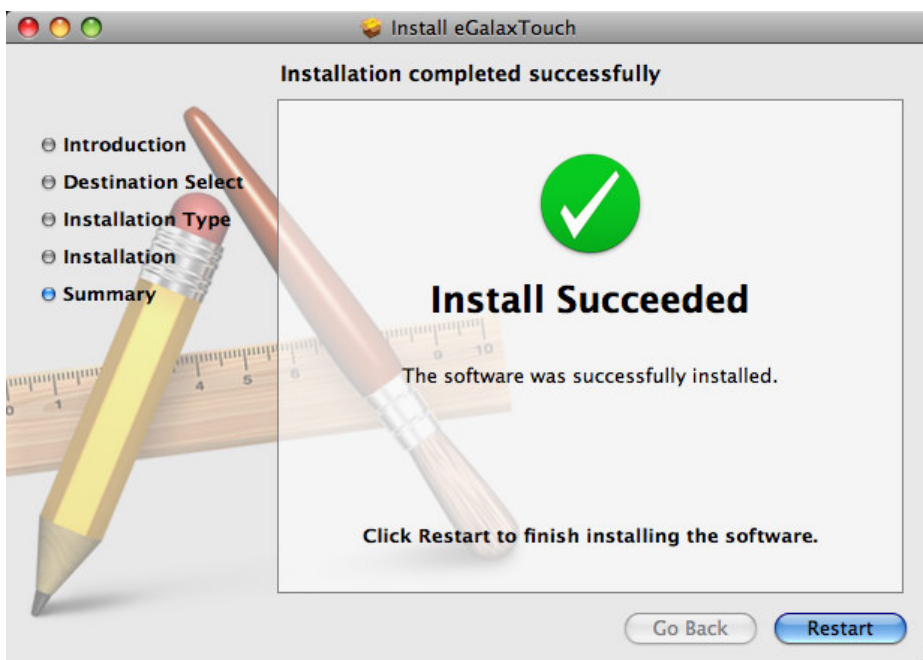
1.2 Select Install button to continue.



- 1.3 Select destination to install if you want to install on different hard disk, than select Continue Installation.



- 1.4 When installation success, press Restart to restart your computer.

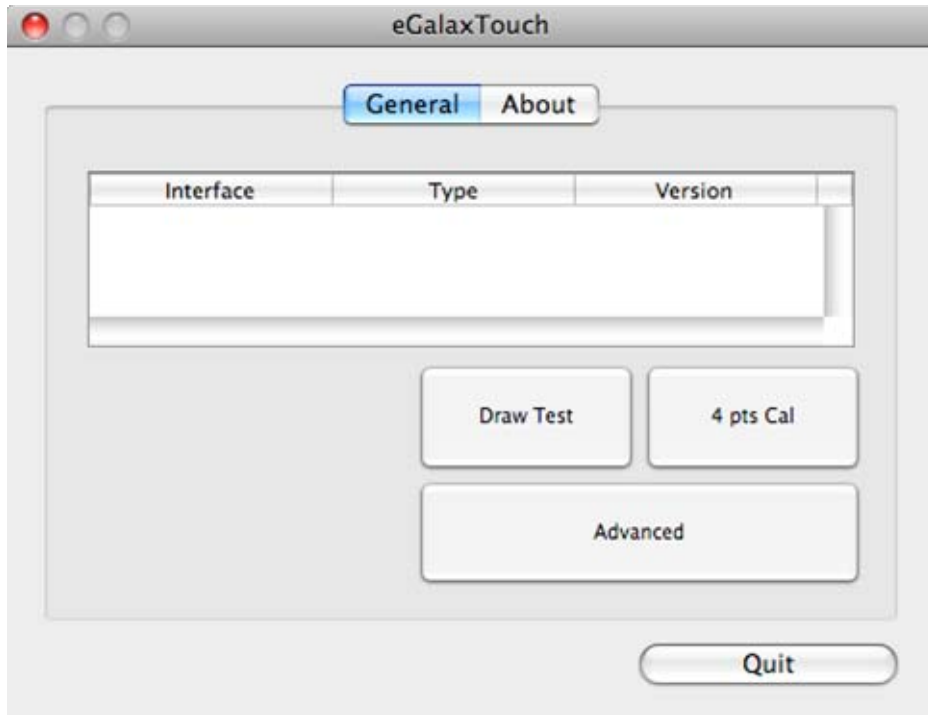


- 1.5 Restart Computer.

2. eGalaxTouch Utility Setting

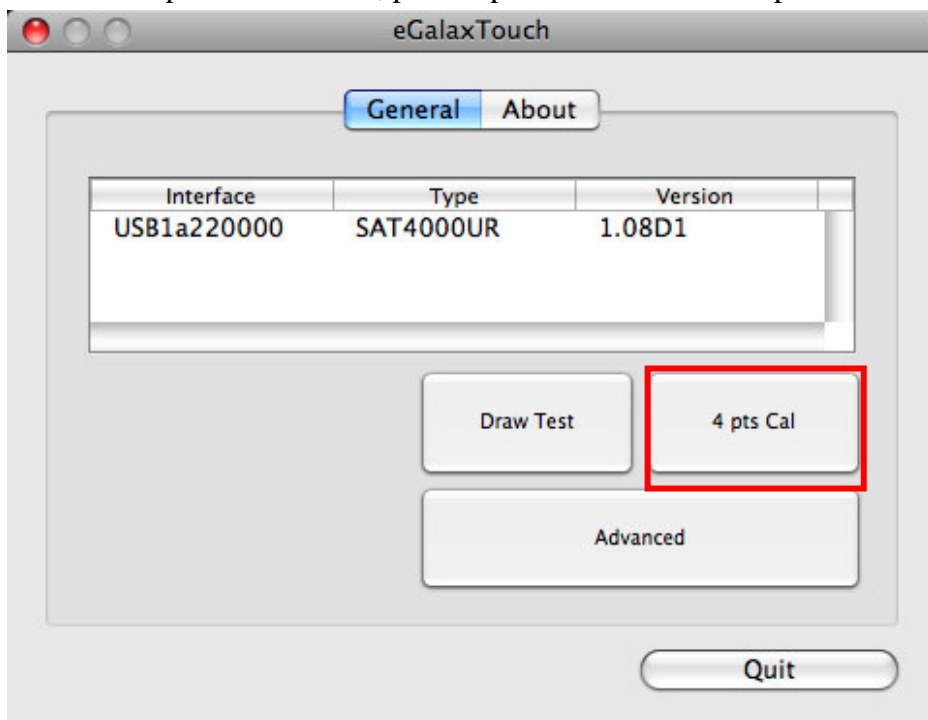
2.1 Launch eGalaxTouch

You can launch eGalaxTouch Utility via \Appliation\eGalaxTouch.app

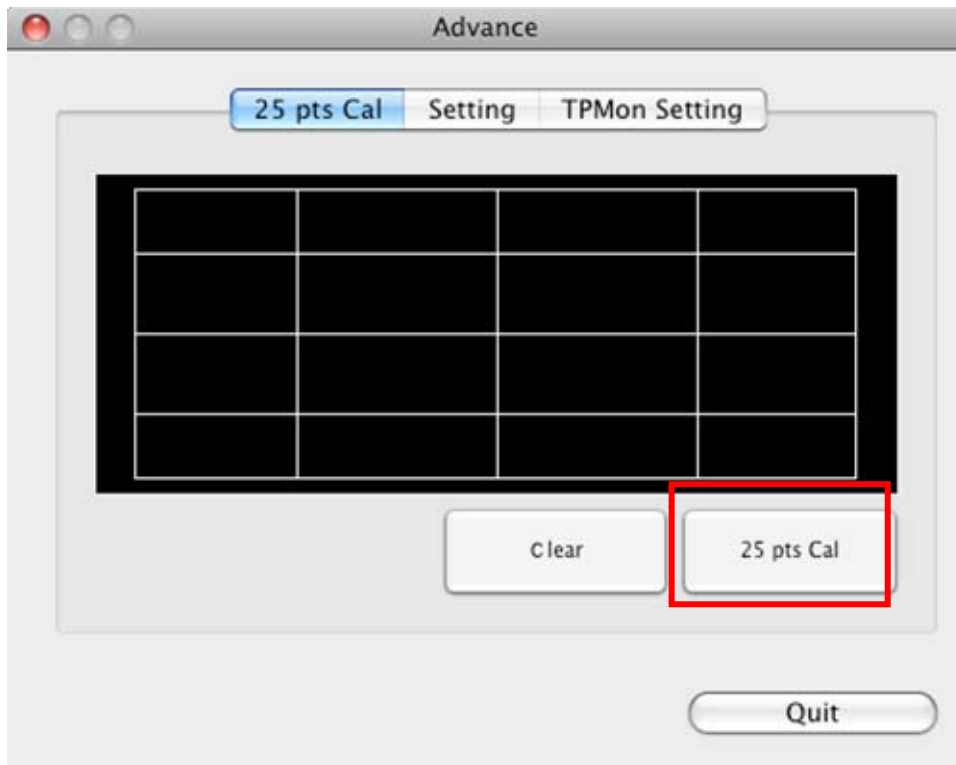


2.2 Calibration

To launch 4 point calibration, press 4 pts Cal to execute the procedure.



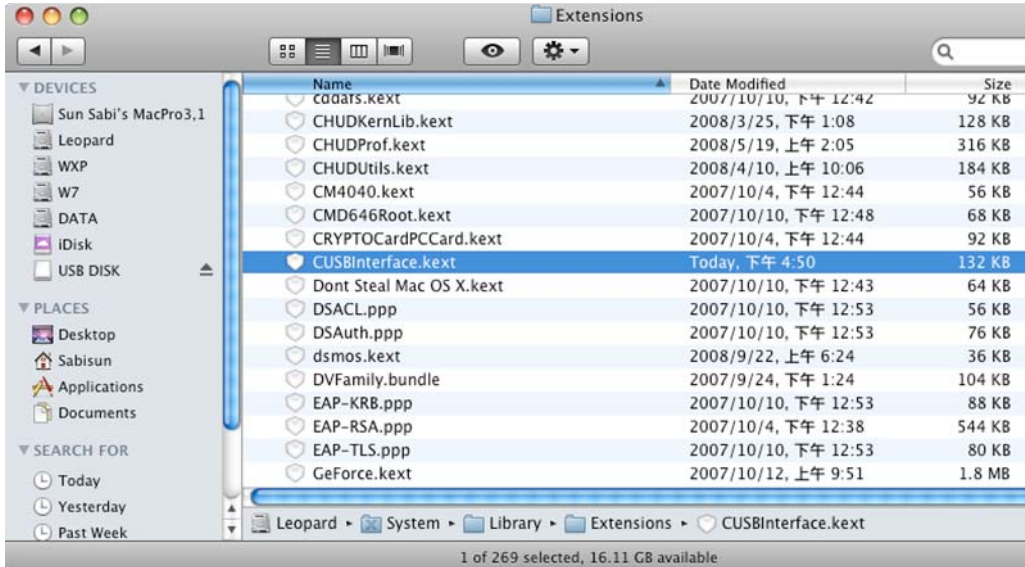
To launch 25 points calibration, press Advance->25 pts Cal



3. Uninstall Driver

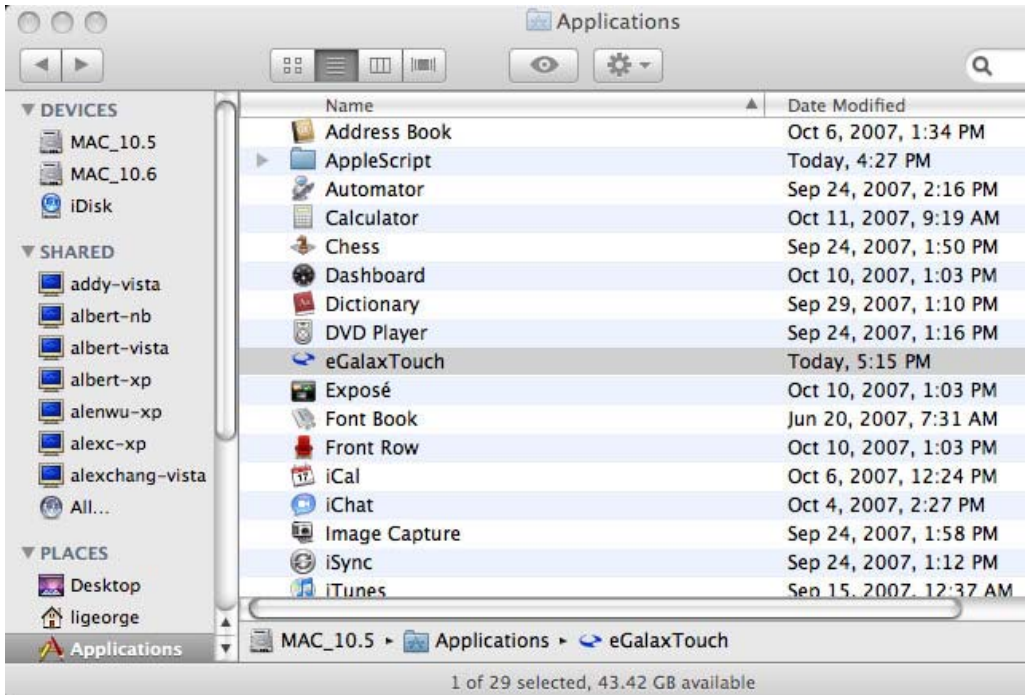
3.1 Delete kernel extension file

Delete /System/Library/Extensions/CUSBInterfce.kext



3.2 Delete eGalaxTouch Utility

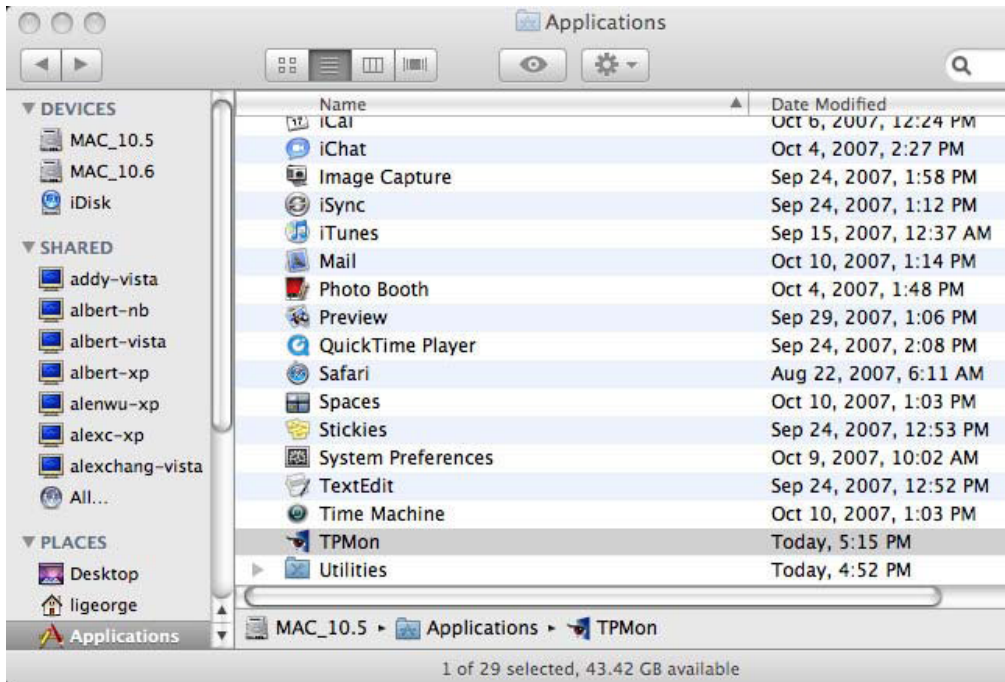
Delete /Applications/eGalaxTouch.app



EETI Mac Touch Driver Installation Guide

3.3 Delete TPMon Utility

Delete /Applications/TPMon.app



3.4 Delete Install Package

Delete /Library/Receipts/cusninterfaceroot.pkg

Delete /Library/Receipts/egalaxtouchroot.pkg

Delete /Library/Receipts/tpmonroot.pkg

